



INSTRUCTIONS FOR: DCLO (DRIVEN CLIP ONS)

PERFORMANCE PRODUCTS

- 1) Install the clamp assembly on the fork tubes.
- 2) Before tightening clamps install bars and switch assemblies.
- 3) Adjust angles and rotation of clip ons.
- 4) Tighten all bolts on the bars and switch assemblies.
- 5) Test lock-to-lock movement, making sure the bars are clear of any obstructions.



TORQUE SPECIFICATIONS: Clamp pinch bolts = 8ft lbs; Clip on bar pinch bolts = 6ft lbs

NOTE: It is recommended to use green or blue Loctite on the bolts. NEVER USE RED!

Please contact us with any questions or concerns:

Tel: 1-866-5-DRIVEN

Email: INFO@DRIVENRACING.COM

DRIVEN REQUIRES THIS PRODUCT TO BE INSTALLED BY A CERTIFIED TECHNICIAN

**This product is sold for off road use only and is not intended for use on public roads. The purchaser of this product releases Driven Performance Products and their distributors of any liability pertaining to installation of purchased parts. Purchaser recognizes that any alteration or modification to the vehicle may increase the risk of injury or accident. For Off Road/Closed Course Use only.*



INSTRUCTIONS FOR: DCLO (DRIVEN CLIP ONS)

PERFORMANCE PRODUCTS

- 1) Install the clamp assembly on the fork tubes.
- 2) Before tightening clamps install bars and switch assemblies.
- 3) Adjust angles and rotation of clip ons.
- 4) Tighten all bolts on the bars and switch assemblies.
- 5) Test lock-to-lock movement, making sure the bars are clear of any obstructions.



TORQUE SPECIFICATIONS: Clamp pinch bolts = 8ft lbs; Clip on bar pinch bolts = 6ft lbs

NOTE: It is recommended to use green or blue Loctite on the bolts. NEVER USE RED!

Please contact us with any questions or concerns:

Tel: 1-866-5-DRIVEN

Email: INFO@DRIVENRACING.COM

DRIVEN REQUIRES THIS PRODUCT TO BE INSTALLED BY A CERTIFIED TECHNICIAN

**This product is sold for off road use only and is not intended for use on public roads. The purchaser of this product releases Driven Performance Products and their distributors of any liability pertaining to installation of purchased parts. Purchaser recognizes that any alteration or modification to the vehicle may increase the risk of injury or accident. For Off Road/Closed Course Use only.*



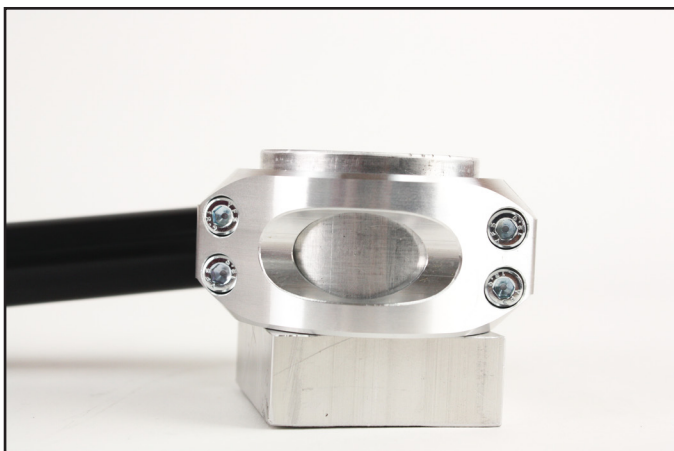
WRONG
(Clamp doesn't have 100%
fork leg engagement).



CORRECT
(Clamp have 100% fork leg
engagement).



WRONG
(Clamp doesn't have 100%
fork leg engagement).



CORRECT
(Clamp have 100% fork leg
engagement).