

**FOR OFF ROAD/RACE USE ONLY!**



**Part#:DHFCB-YA2 HALO FUEL BASE INSTRUCTIONS  
INSTALLATION INSTRUCTIONS**

DRIVEN PERFORMANCE PRODUCTS  
WWW.DRIVENRACING.COM  
866-5-DRIVEN

**NOTE : CAP AND BASE SOLD SEPERATLY**

1. Make sure you have all of the required parts for installation. (see checklist below)
  2. Remove plastic shroud ( fig 1)
  3. **Remove oem gas cap ( see hole image important ) pic 1**
  4. **Install adapter plate WITH 4 m5 X 16 screws using rubber plug provided ,very important ! (fig 2)**
  5. **Install gas cap base using supplied gasket (very important) do not tighten bolts yet.**
  6. Reinstall shroud carefully so you don't brake tab, align tabs with male tabs on gas cap base and tighten screws until they bottom out.
  6. when installing the shroud make sure the tabs are engaging the female tabs on the shroud (fig-4)
  8. Finish installing shroud with 2 bolts aligning shroud with gas cap base. (fig 3)
- Install the ¼ turn cap by pushing down and turning clockwise until it locks into place. You can release the cap by pushing down and turning it counter-clockwise.

**TOOLS REQUIRED**

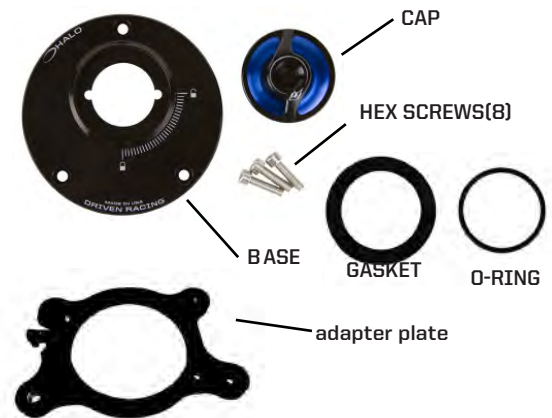
- 4mm Hex Key
- 3mm Hex Key (Honda)
- Blue (#242) Loctite

**TORQUE SPECS AND INFO**

- All Hardware: 6FT/LB

**PARTS CHECKLIST**

- Halo Cap
- Halo Base
- O-Ring (installed on Halo cap)
- Gasket (installed on Halo base)
- Hardware (all necessary hardware)
- adapter plate



**THIS PRODUCT IS INTENDED TO BE INSTALLED BY A CERTIFIED TECHNICIAN\***

**FOR OFF ROAD/RACE USE ONLY!**



**Part#:DHFCB-YA2 HALO FUEL BASE INSTRUCTIONS  
INSTALLATION INSTRUCTIONS**

DRIVEN PERFORMANCE PRODUCTS  
WWW.DRIVENRACING.COM  
866-5-DRIVEN

**NOTE : CAP AND BASE SOLD SEPERATLY**

1. Make sure you have all of the required parts for installation. (see checklist below)
  2. Remove plastic shroud ( fig 1)
  3. **Remove oem gas cap ( see hole image important ) pic 1**
  4. **Install adapter plate WITH 4 m5 X 16 screws using rubber plug provided ,very important ! (fig 2)**
  5. **Install gas cap base using supplied gasket (very important) do not tighten bolts yet.**
  6. Reinstall shroud carefully so you don't brake tab, align tabs with male tabs on gas cap base and tighten screws until they bottom out.
  6. when installing the shroud make sure the tabs are engaging the female tabs on the shroud (fig-4)
  8. Finish installing shroud with 2 bolts aligning shroud with gas cap base. (fig 3)
- Install the ¼ turn cap by pushing down and turning clockwise until it locks into place. You can release the cap by pushing down and turning it counter-clockwise.

**TOOLS REQUIRED**

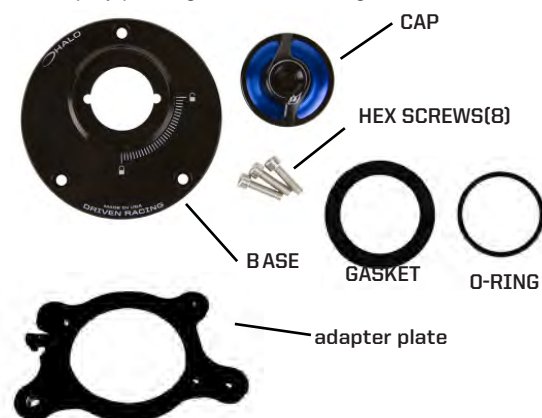
- 4mm Hex Key
- 3mm Hex Key (Honda)
- Blue (#242) Loctite

**TORQUE SPECS AND INFO**

- All Hardware: 6FT/LB

**PARTS CHECKLIST**

- Halo Cap
- Halo Base
- O-Ring (installed on Halo cap)
- Gasket (installed on Halo base)
- Hardware (all necessary hardware)
- adapter plate



**THIS PRODUCT IS INTENDED TO BE INSTALLED BY A CERTIFIED TECHNICIAN\***

fig -1



pic-1

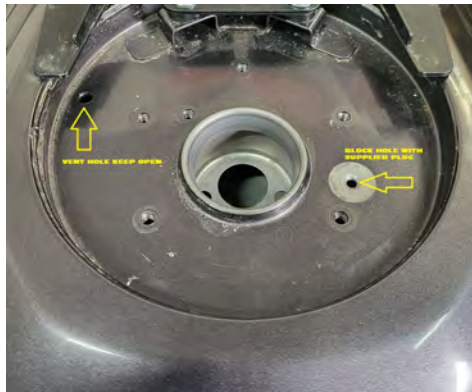
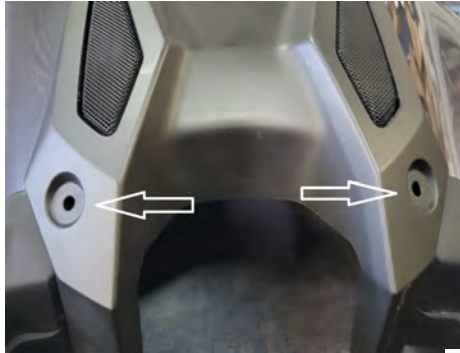


fig-2



fig-3



pic-2



fig-4

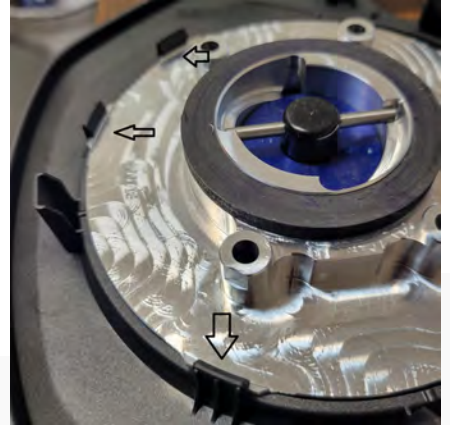


fig -1



pic-1

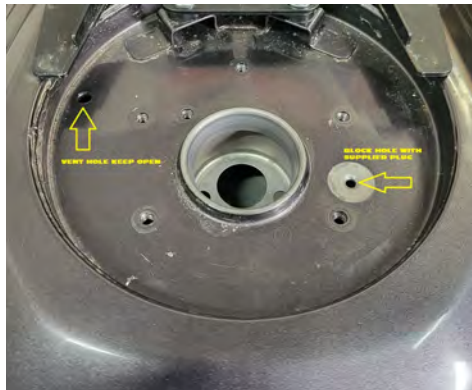
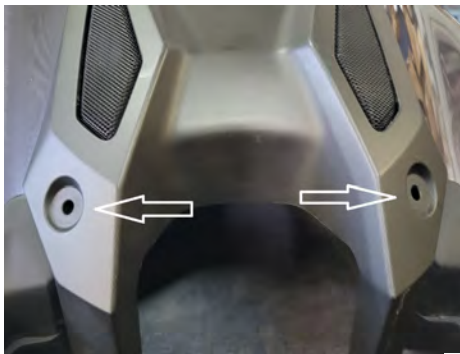


fig-2



fig-3



pic-2

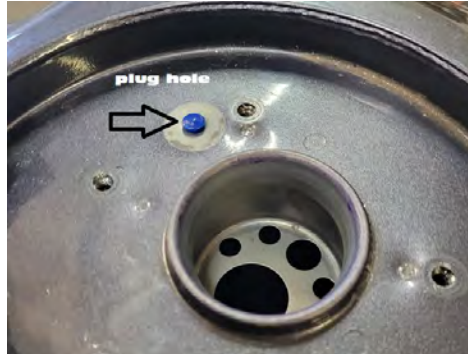


fig-4

