

FOR OFF ROAD/RACE USE ONLY!



**PART#: DXL1 (D-AXIS BRAKE LEVER GUARD)
INSTALLATION INSTRUCTIONS**



For Most OEM Handlebars With Female Threads

1. Carefully remove the OEM bar end weight.
2. Using Blue Loctite and the 5mm x 12mm screws and washers connect the sliding arm to the main arm. Do not tighten.
3. Determine what size hardware the OEM bar end weight uses.
4. Locate the female threads inside the handlebar and use the corresponding hardware provided in the kit to mount the guard. Handlebars using 6mm mounting hardware will require the use of the 6mm anodized bushing. There are two 6mm provided at different lengths. Use the one that suits your application the best.
5. Carefully check the length of the OEM brake lever and if there is any clearance issues use the provided black anodized spacer to provide more space for the lever to operate.
6. Mount the guard into the desired position and turn the handlebars from left to right to make sure the guard does not make contact with any other parts of the bike. Tighten until snug.
7. Adjust the length of the sliding arm to the desired position. Approximately 10-20mm clearance in front of the folding tip is acceptable. Gently tighten the 5mm screws until snug.
8. Check all hardware once more after a couple rides to ensure everything remains snug.

For Most Aftermarket/OEM Hollow Bars

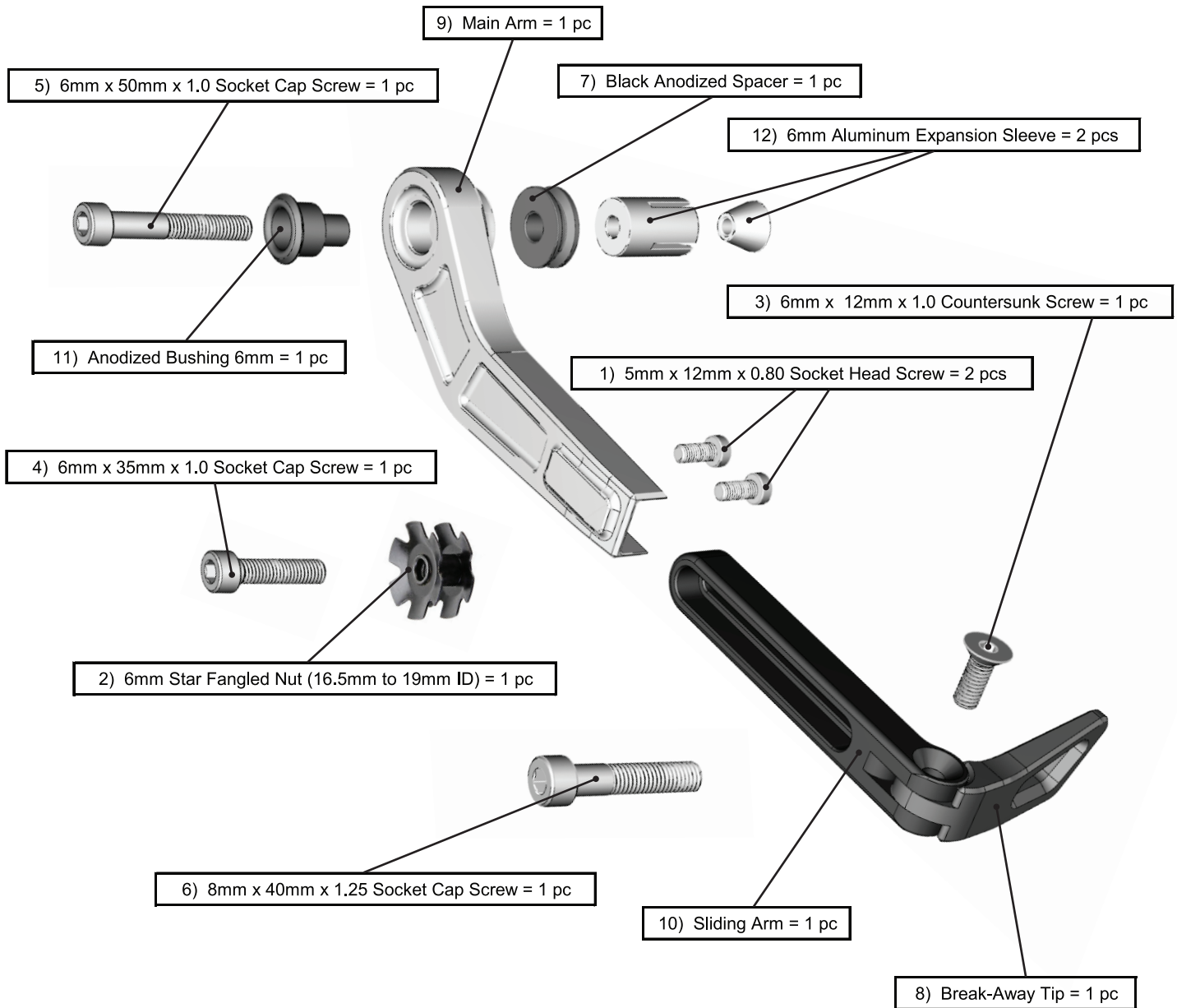
1. Carefully remove end cap/bar end if necessary.
2. Using Blue Loctite and the 5mm x 12mm screws and washers connect the sliding arm to the main arm. Do not tighten.
3. Determine the inside diameter of the handlebars you are using.
 - 14mm-17mm bars --> Star fangled nut
 - 16.5mm-19mm bars --> Aluminum expansion sleeve
4. For use with the star fangled nut (SFN): Using the longer 6mm hardware, screw the bolt into the SFN and gently tap the SFN into the bar with the tips facing away from the bike just until it sits below flush in the bar. Remove the screw and assemble the lever using the 6mm anodized bushing and the 6mm x 35mm screw. Mount the guard into the desired position and turn the handlebars from left to right to make sure the guard does not make contact with any other parts of the bike. Tighten until snug. Skip step #5.
5. For use with the aluminum expansion sleeve (AES): Assemble the lever using the 6mm anodized bushing and the 6mm x 50mm screw. The larger female piece is installed in front of the smaller male piece. Gently tighten the AES by hand and insert into the bar. Mount the guard into the desired position and turn the handlebars from left to right to make sure the guard does not make contact with any other parts of the bike. Using a hex key turn the 6mm screw clockwise and tighten until snug.
6. Carefully check the length of the OEM brake lever and if there is any clearance issues use the provided black anodized spacer to provide more space for the lever to operate.
7. Mount the guard into the desired position and turn the handlebars from left to right to make sure the guard does not make contact with any other parts of the bike. Gently tighten until snug.
8. Adjust the length of the sliding arm to the desired position. Approximately 10-20mm clearance in front of the folding tip is acceptable. Gently tighten the 5mm screws until snug.
9. Check all hardware once more after a couple rides to ensure everything remains snug.

THIS PRODUCT IS INTENDED TO BE INSTALLED BY A CERTIFIED TECHNICIAN*

FOR OFF ROAD/RACE USE ONLY!



**PART#: DXL1 (D-AXIS BRAKE LEVER GUARD)
EXPLODED VIEW**



D-AXIS Lever Guard Parts List	
1) 5mm x 12mm x 0.80 Socket Head Screw = 2 pcs	7) Black Anodized Spacer = 1 pc
2) 6mm Star Fangled Nut (16.5mm to 19mm ID) = 1 pc	8) Break-Away Tip = 1 pc
3) 6mm x 12mm x 1.0 Countersunk Screw = 1 pc	9) Main Arm = 1 pc
4) 6mm x 35mm x 1.0 Socket Cap Screw = 1 pc	10) Sliding Arm = 1 pc
5) 6mm x 50mm x 1.0 Socket Cap Screw = 1 pc	11) Anodized Bushing 6mm = 1 pc
6) 8mm x 40mm x 1.25 Socket Cap Screw = 1 pc	12) 6mm Aluminum Expansion Sleeve = 2 pcs

THIS PRODUCT IS INTENDED TO BE INSTALLED BY A CERTIFIED TECHNICIAN*