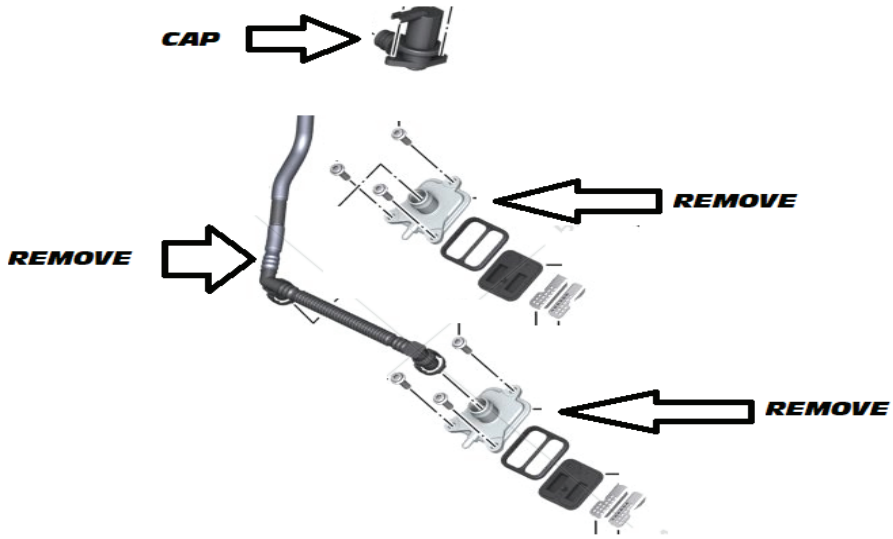




FOR OFF ROAD USE ONLY

19-20 BMW S 1000 RR BLOCKOFF PLATES

1. Remove the hoses from the factory reed covers
2. Remove BOTH the reed covers from the cylinder head
3. Cap "sis" valve using supplied cap and zip tie in place .



FOR OFF ROAD USE ONLY

19-20 BMW S 1000 RR BLOCKOFF PLATES

1. Remove the hoses from the factory reed covers
2. Remove BOTH the reed covers from the cylinder head
3. Cap "sis" valve using supplied cap and zip tie in place .

