

FOR OFF ROAD/RACE USE ONLY!



Driven TT Rearsets for '15-'17 BMW S 1000RR

Part#: DRP-718

INSTALLATION INSTRUCTIONS

Removal

Shifter Side

1. Remove shift rod from shift lever.
2. Remove OEM shift pedal, retain OEM screw.
3. Remove frame plate from bike.

Brake Side

1. Remove exhaust bolt.
2. Remove 2 m6 bolts holding heel guard.
3. Remove frame bracket.
4. Remove master cylinder plunger pin from brake pedal.
5. Remove rear brake switch and disconnect it from bike.

TOOLS REQUIRED

- 8mm Open End Wrench
- 5mm Hex Key
- 6mm Hex Key
- 8mm Hex Key
- 5mm Torx
- 6mm Torx
- 8mm Torx
- Needle Nose Pliers
- Screw Driver
- Blue Loctite
- Impact Gun

THE USE OF BLUE LOCTITE IS REQUIRED ON ALL MOUNTING HARDWARE!

Installation

NOTE: ALL PIVOT POINTS MUST BE TIGHTENED USING BLUE LOCTITE AND AN IMPACT GUN.

Shifter Side

1. Install foot peg in frame bracket.
2. Install shift pedal using spacer and OEM bolt.
3. Reconnect shift rod into shift pedal.
4. Install frame bracket onto bike.

Brake Side

1. Install foot peg in frame bracket.
2. Connect master cylinder plunger to brake lever using OEM pin.
3. Install frame bracket to bike.
4. Install master cylinder using 2 m6 bolts supplied.
5. Use blue Loctite on all bolts and torque all to required specs.
6. Make sure nothing interferes with proper operation of motorcycle.

TORQUE VALUES

- M5 = 6FT/LBS
- M6 = 10FT/LBS
- M8 = 25FT/LBS
- M10 = 45FT/LBS

Make final adjustments as necessary and re-check all hardware after the first 500 miles of use.

THIS PRODUCT IS INTENDED TO BE INSTALLED BY A CERTIFIED TECHNICIAN*

FOR OFF ROAD/RACE USE ONLY!



(Fig 1.) Brake



(Fig 2.) Standard Shift



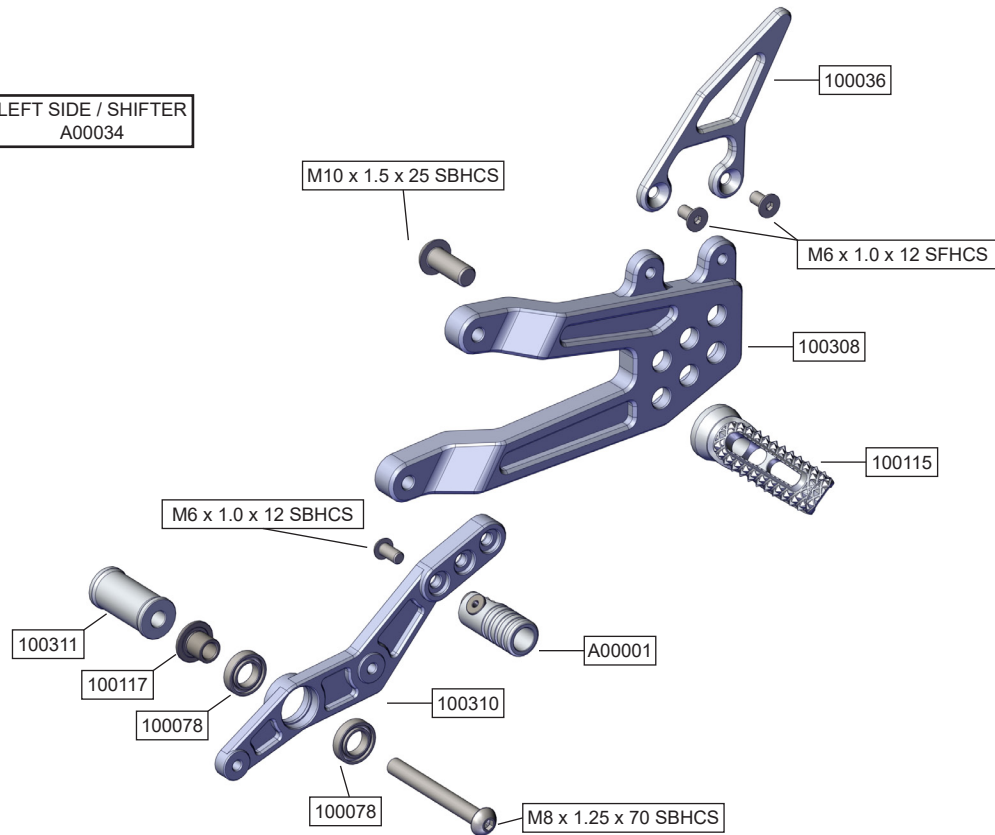
(Fig 3.) Reverse Shift

THIS PRODUCT IS INTENDED TO BE INSTALLED BY A CERTIFIED TECHNICIAN*

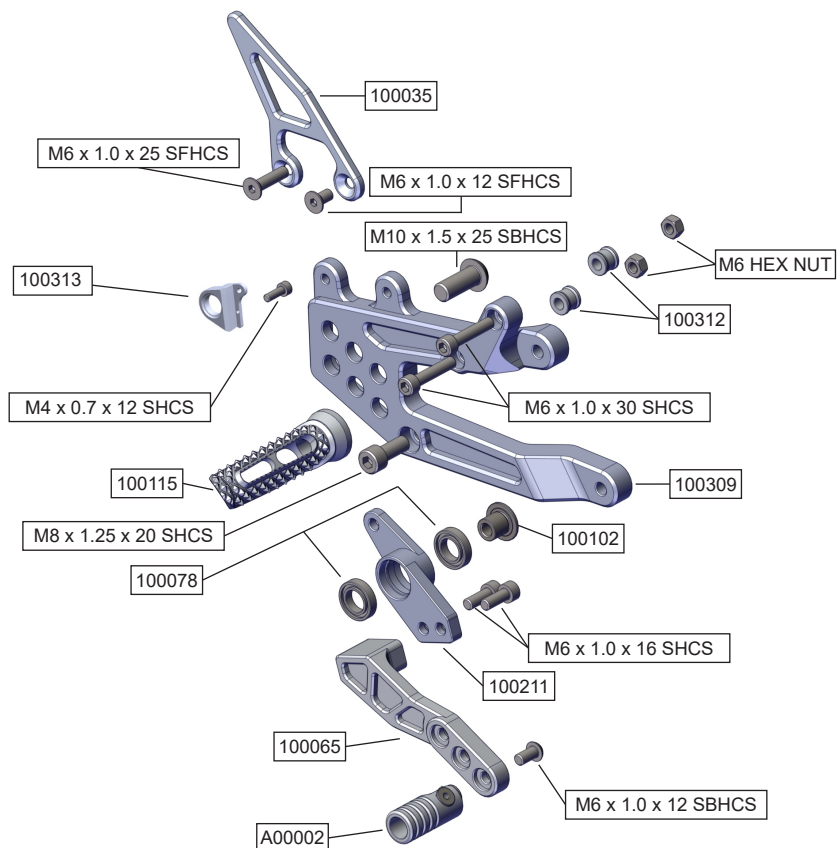
FOR OFF ROAD/RACE USE ONLY!



**LEFT SIDE / SHIFTER
A00034**



**RIGHT SIDE / BRAKE
A00035**



THIS PRODUCT IS INTENDED TO BE INSTALLED BY A CERTIFIED TECHNICIAN*