



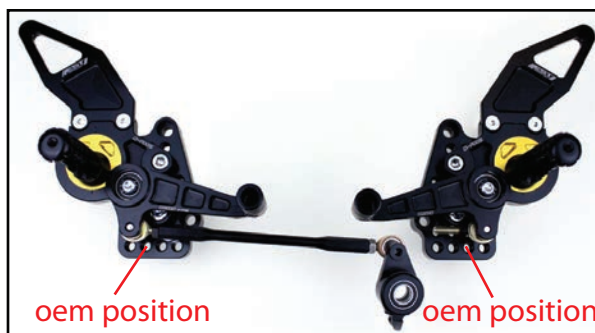
DRIVEN PERFORMANCE PRODUCTS  
9362 ETON AVE  
UNIT B  
CHATSORTH, CA 91311  
WWW.DRIVENRACING.COM 866-5-DRIVEN



## 07-11 DUCATI 848/1098/1198 REAR SETS PART#: DRP-513



### INSTALLATION INSTRUCTIONS



USE BLUE LOCTITE ON ALL MOUNTING BOLTS!



1. It is recommended that you remove or lower the bellypan, in order to easily access the shift and brake linkage.
2. Remove the bolt & nut on the heim joint on the gear shift arm at the shift shaft and remove gear shift arm, noting the original position.
3. Remove the stock footrest assemblies from both sides of the bike.
4. Remove the brake pedal assembly.
5. Remove master cylinder bolt (#2) and replace it with the supplied M10x1.5x25mm fastener.
6. Install left and right frame brackets.
7. Install footpegs onto footrest brackets and adjust eccentric units to desired location, noting index marks.
8. Install the new shift rod assembly onto the gear shift arm. (inside of arm)
9. Bolt the other heim joint to the inside of the shifter. (leave jam nuts loose)
10. Install the left footrest bracket assembly in the desired mounting position.
11. Install gear shift arm on shift shaft in the original position.
12. Adjust shift rod to attain desired shifter/footpeg height.
13. Tighten heim joint jam nuts to finalize shifter height.
14. Thread your original lock nut (#5) onto the supplied master cylinder pushrod (#6), and then into the heim joint (#4), leaving the lock nut loose.
15. Install the heim joint/pushrod assembly onto the back of the master cylinder bellcrank, using your original return spring retainer bolt (#3).
16. Install your original brake lamp switch stopper (#8) ALL THE WAY IN the brake bellcrank, and thread the lock nut (leaving it loose) on the opposite side.
17. Install the pushrod into the master cylinder boot and rotate the brake bellcrank into the proper orientation, making sure that the brake switch plunger is being compressed by the stopper.
18. Bolt the bellcrank to the master cylinder mounting bracket in the original pedal mounting hole, making sure that the return spring is hooked behind the retainer bolt.
19. Adjust the master cylinder pushrod for proper brake freeplay (1.5mm-2mm) and tighten lock nut.

**IF THE MASTER CYLINDER PUSHROD IS IMPROPERLY ADJUSTED IT WILL CAUSE UNWANTED BRAKE ACTUATION, POSSIBLE REAR WHEEL LOCKUP, AND BRAKE SYSTEM DAMAGE!!!**

20. Install the brake rod/heim joint assembly onto the inside of the brake pedal.
21. Install the right footrest bracket assembly in the desired mounting position.
22. Bolt the other heim joint on the brake rod to the bellcrank with the supplied bolt and spacer.
23. Adjust the brake rod to the desired pedal height and then tighten the lock nuts.
24. Adjust the brake switch stopper for proper lamp operation and then tighten the lock nut.
25. Reinstall the bellypan, using the supplied spacer, bolt, and nylon washer on the left rearmost bolt.
26. Check torque on all mounting bolts before riding, and again after approximately 20-50 miles to verify.
27. If reverse (GP) shifting is desired, remove bolt from gear shift arm and rotate the arm 180°, then reinstall arm and bolt (shift rod must be moved to the outside of the arm with the supplied bolt, washer, and nut).

**DRIVEN REQUIRES THIS PRODUCT TO BE INSTALLED BY A CERTIFIED TECHNICIAN**

### TOOLS REQUIRED



8mm hex key  
6mm hex key  
5mm hex key  
4mm hex key  
8mm end wrench  
10mm end wrench (for shift & brake rod jam nuts)  
3/8" end wrench (for new shift & brake rods)  
Loctite (#242) Blue

### TORQUE SPECS AND INFO



M10x1.5 – 55ft-lb (660in-lb)  
M8x1.25 – 20ft-lb (240in-lb)  
M6x1.0 – 13ft-lb (156in-lb)  
M5x0.8 – 5ft-lb (60in-lb)

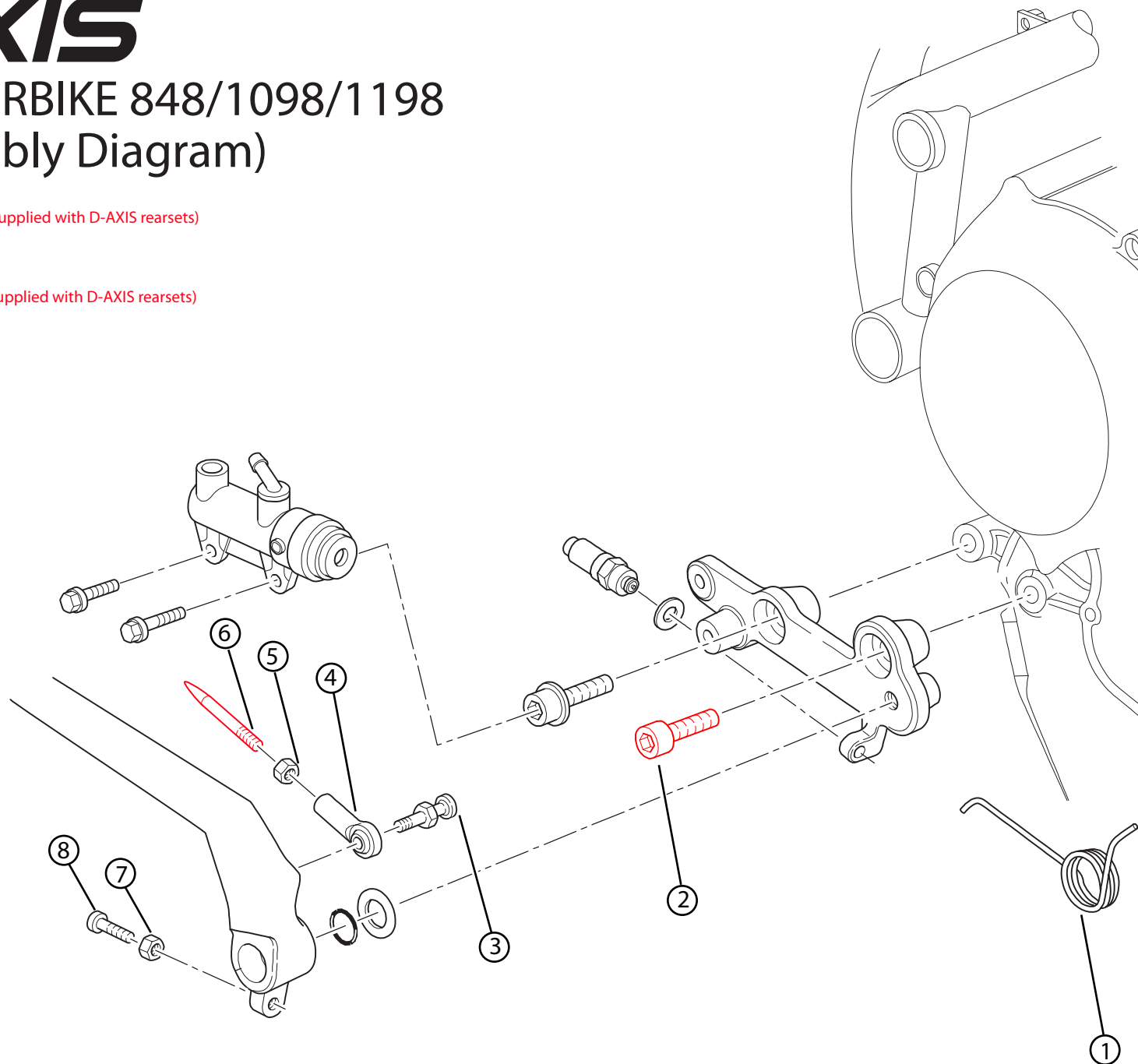
\*OEM height set at the lowest row of mounting holes, second from the back most position

**\*FOR OFF ROAD / CLOSED COURSE USE ONLY**

# D-AXIS

## DUCATI SUPERBIKE 848/1098/1198 (Brake Assembly Diagram)

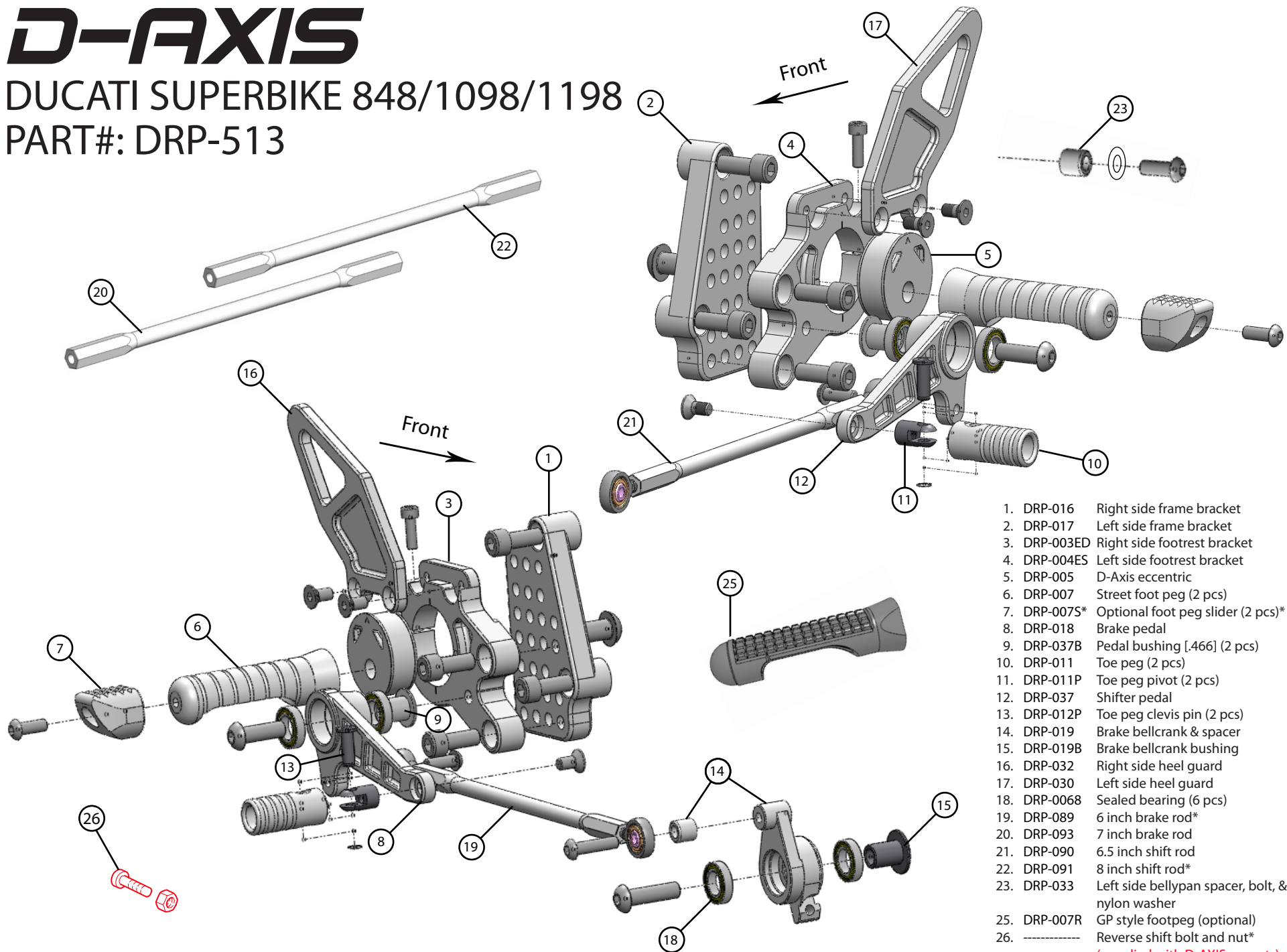
1. Return spring (oem)
2. M10 x 25mm\* (replacement bolt supplied with D-AXIS rearsets)
3. Spring retainer bolt (oem)
4. Heim Joint (oem)
5. Lock nut (oem)
6. Pushrod\* (replacement pushrod supplied with D-AXIS rearsets)
7. Lock nut (oem)
8. Brake lamp stopper (oem)



# D-AXIS

DUCATI SUPERBIKE 848/1098/1198

PART#: DRP-513



1. DRP-016 Right side frame bracket
2. DRP-017 Left side frame bracket
3. DRP-003ED Right side footrest bracket
4. DRP-004ES Left side footrest bracket
5. DRP-005 D-Axis eccentric
6. DRP-007 Street foot peg (2 pcs)
7. DRP-007S\* Optional foot peg slider (2 pcs)\*
8. DRP-018 Brake pedal
9. DRP-037B Pedal bushing [.466] (2 pcs)
10. DRP-011 Toe peg (2 pcs)
11. DRP-011P Toe peg pivot (2 pcs)
12. DRP-037 Shifter pedal
13. DRP-012P Toe peg clevis pin (2 pcs)
14. DRP-019 Brake bellcrank & spacer
15. DRP-019B Brake bellcrank bushing
16. DRP-032 Right side heel guard
17. DRP-030 Left side heel guard
18. DRP-0068 Sealed bearing (6 pcs)
19. DRP-089 6 inch brake rod\*
20. DRP-093 7 inch brake rod
21. DRP-090 6.5 inch shift rod
22. DRP-091 8 inch shift rod\*
23. DRP-033 Left side bellypan spacer, bolt, & nylon washer
25. DRP-007R GP style footpeg (optional)
26. ----- Reverse shift bolt and nut\*  
(supplied with D-AXIS rearsets)