



DRIVEN PERFORMANCE PRODUCTS
 9362 ETON AVE
 UNIT B
 CHATSWORTH, CA 91311
 WWW.DRIVENRACING.COM 866-5-DRIVEN



09-10 SUZUKI GSX-R1000 REAR SETS
 PART#: DRP-509



INSTALLATION INSTRUCTIONS



USE BLUE LOCTITE ON ALL MOUNTING BOLTS!
 USE LOCTITE ANTI-SEIZE ON THE HEADS OF ALL COUNTERSUNK BOLTS



1. Remove the stock footrest assemblies from both sides of the bike.
2. Loosen the jam nut on the heim joint on the gear shift arm at the shift shaft.
3. Remove the external snap ring that retains the shifter onto its shaft.
4. Remove stock shifter from the shaft and unscrew the shift rod from the upper heim joint.
5. Thread the new shift rod onto the upper heim joint (*leave jam nuts loose*)
6. Install the new shifter onto the shaft and reinstall the original snap ring.
7. Bolt the lower heim joint to the shifter.
8. Remove rubber bushing and associated parts from original right side footrest assembly, and install into new right side frame bracket.
9. Install left and right frame brackets.
10. Reinstall heatshield bolt and associated hardware.
11. Install footpeg onto footrest bracket and adjust eccentric unit to desired location, noting index marks.
12. Install left and right footrest bracket assemblies in their desired mounting positions.
13. Adjust sliding portion of the shifter unit to attain desired shifter/footpeg distance.
14. Adjust shift rod to attain desired shifter/footpeg height.
15. Tighten heim joint jam nuts to finalize shifter height.
16. Rotate master cylinder reservoir hose so that it is routed below the rear caliper hose. (*see fig. 2*)
17. Secure original rear brake lamp switch so it will not become entangled in the rear shock or swingarm.
 *To use the rear brake light with rear brake, you must install a 10 x 1.0 brake light pressure switch. Available from any Parts Unlimited dealer.
18. Replace original master cylinder clevis with new one and mount master cylinder to master cylinder bracket.
19. Adjust clevis to attain desired brake pedal height, tighten clevis jam nut, and install clevis pin/spacer/washer/cotter pin.
20. Check torque on all mounting bolts before riding, and again after approximately 20-50 miles to verify
21. If reverse (GP) shifting is desired, remove bolt from gear shift arm and rotate the arm 180°, then reinstall arm and bolt.



Fig. 2

DRIVEN REQUIRES THIS PRODUCT TO BE INSTALLED BY A CERTIFIED TECHNICIAN

TOOLS REQUIRED



- 6mm hex key
- 5mm hex key
- 4mm hex key
- 8mm end wrench (*optional – to remove gear shift arm for reverse shifting*)
- 10mm end wrench (*for jam nuts*)
- 12mm end wrench (*for clevis jam nut*)
- 3/8" end wrench (*for new shift rod*)
- External snap ring pliers
- Needle-nose pliers
- Blue Loctite (#242)
- Loctite Anti-Seize Lubricant

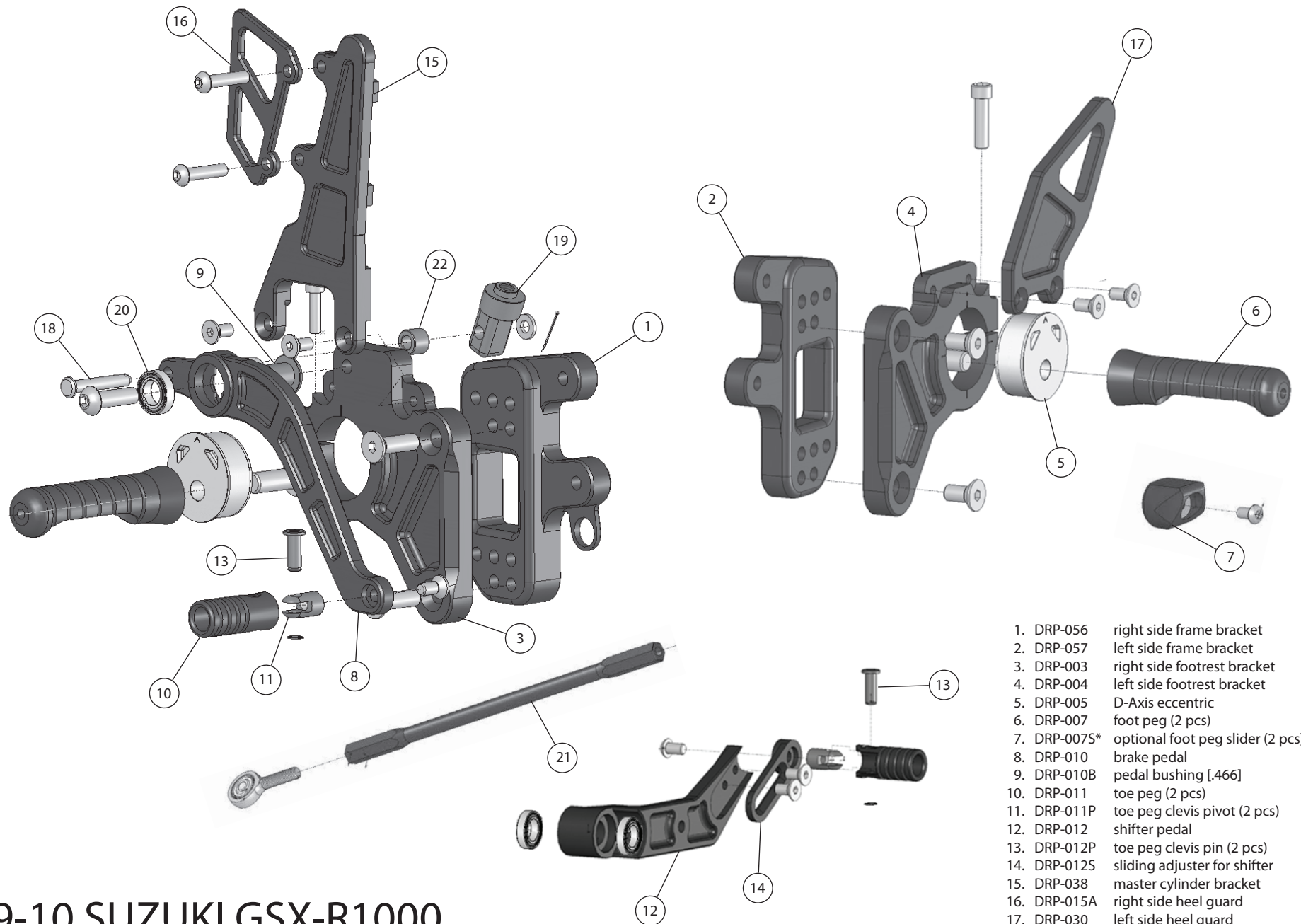
TORQUE SPECS AND INFO



- M10x1.5 – 55ft-lb (660in-lb)
- M8x1.25 – 20ft-lb (240in-lb)
- M6x1.0 – 13ft-lb (156in-lb)
- M5x0.8 – 5ft-lb (60in-lb)

*OEM height set at the lowest forward mounting hole with the foot peg set at the zero position.

***FOR OFF ROAD / CLOSED COURSE USE ONLY**



09-10 SUZUKI GSX-R1000

PART#: DRP-509

- 1. DRP-056 right side frame bracket
- 2. DRP-057 left side frame bracket
- 3. DRP-003 right side footrest bracket
- 4. DRP-004 left side footrest bracket
- 5. DRP-005 D-Axis eccentric
- 6. DRP-007 foot peg (2 pcs)
- 7. DRP-007S* optional foot peg slider (2 pcs)*
- 8. DRP-010 brake pedal
- 9. DRP-010B pedal bushing [.466]
- 10. DRP-011 toe peg (2 pcs)
- 11. DRP-011P toe peg clevis pivot (2 pcs)
- 12. DRP-012 shifter pedal
- 13. DRP-012P toe peg clevis pin (2 pcs)
- 14. DRP-012S sliding adjuster for shifter
- 15. DRP-038 master cylinder bracket
- 16. DRP-015A right side heel guard
- 17. DRP-030 left side heel guard
- 18. DRP-042 master cylinder clevis pin
- 19. DRP-044 master cylinder clevis
- 20. DRP-068 sealed bearing (4 pcs)
- 21. DRP-092 shift rod 8.5 inch
- 22. DRP-045 brake clevis pin spacer long