



DRIVEN PERFORMANCE PRODUCTS
 9362 ETON AVE
 UNIT B
 CHATSWORTH, CA 91311
 WWW.DRIVENRACING.COM 866-5-DRIVEN



06-10 YAMAHA R6 REAR SETS
 PART#: DRP-505



INSTALLATION INSTRUCTIONS



USE BLUE LOCTITE ON ALL MOUNTING BOLTS!
 USE LOCTITE ANTI-SEIZE ON THE HEADS OF ALL COUNTERSUNK BOLTS



1. Remove the stock footrest assemblies from both sides of the bike.
2. Loosen the jam nut on the heim joint on the gear shift arm at the shift shaft.
3. Remove the socket head shoulder bolt that retains the shifter onto the kickstand bracket.
4. Remove stock shifter and unscrew the shift rod from the upper heim joint.
5. Thread the new shift rod onto the upper heim joint (*leave jam nuts loose*)
6. Install the new shifter in the original location utilizing the included bolt and bushing.
7. Bolt the lower heim joint to the shifter.
8. Install left and right frame brackets.
**If installing on a bike equipped with stock exhaust, EXUP cover must be trimmed in the location marked in the accompanying photos or removed.*
9. Bolt exhaust hanger to muffler w/supplied bolt and washer (*clamp at header/EXUP may need to be loosened/adjusted to align holes*)
10. Install footpeg onto footrest bracket and adjust eccentric unit to desired location, noting index marks.
11. Install left and right footrest bracket assemblies in the desired mounting hole.
12. Adjust sliding portion of the shifter unit to attain desired shifter/footpeg distance.
13. Adjust shift rod to attain desired shifter/footpeg height.
14. Tighten heim joint jam nuts to finalize shifter height.
15. Replace original master cylinder clevis with new one and mount master cylinder to master cylinder bracket.
16. Adjust clevis to attain desired brake pedal height, tighten clevis jam nut, and install clevis pin/spacer/washer/cotter pin.
17. Check torque on all mounting bolts before riding, and again after approximately 20-50 miles to verify.
18. If reverse (GP) shifting is desired, remove bolt from gear shift arm and rotate the arm 180 degrees, then reinstall arm and bolt.



Fig. 1



Fig. 2
 (EXUP COVER)

DRIVEN REQUIRES THIS PRODUCT TO BE INSTALLED BY A CERTIFIED TECHNICIAN

TOOLS REQUIRED



- 6mm hex key
- 5mm hex key
- 4mm hex key
- 8mm end wrench (*optional – to remove gear shift arm for reverse shifting*)
- 10mm end wrench (*for jam nuts*)
- 12mm end wrench (*for clevis jam nut*)
- 3/8" end wrench (*for new shift rod*)
- needle-nose pliers (*for cotter pin*)
- Blue Loctite (#242)
- Loctite Anti-Seize Lubricant

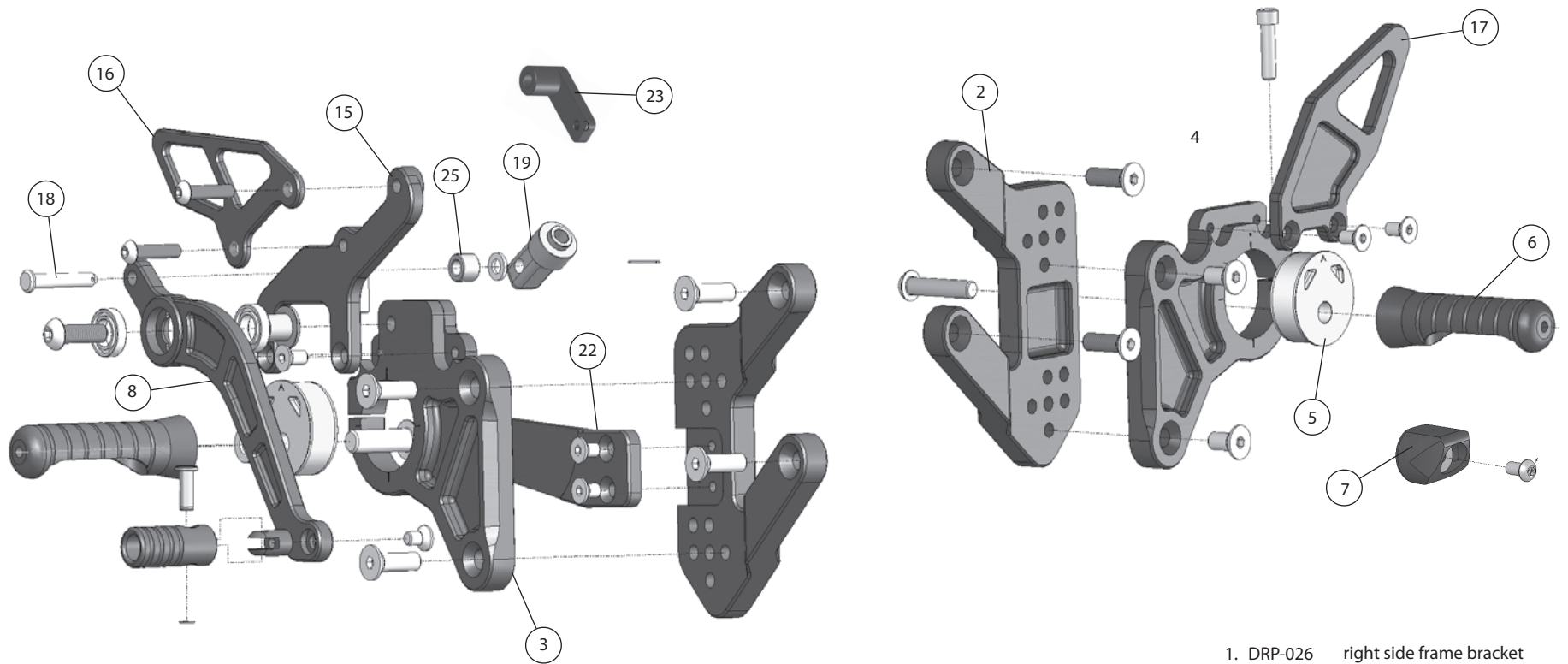
TORQUE SPECS AND INFO



- M10x1.5 – 55ft-lb (660in-lb)
- M8x1.25 – 20ft-lb (240in-lb)
- M6x1.0 – 13ft-lb (156in-lb)
- M5x0.8 – 5ft-lb (60in-lb)

*OEM height set at the lowest forward mounting hole with the foot peg set at the zero position.

***FOR OFF ROAD / CLOSED COURSE USE ONLY**



1. DRP-026 right side frame bracket
2. DRP-027 left side frame bracket
3. DRP-003 right side footrest bracket
4. DRP-004 left side footrest bracket
5. DRP-005 D-Axis eccentric (2 pcs)
6. DRP-007 foot peg (2 pcs)
7. DRP-007S* optional foot peg slider (2 pcs)*
8. DRP-028 brake pedal
9. DRP-010B brake pedal bushing
10. DRP-011 toe peg (2 pcs)
11. DRP-011P toe peg pivot (2 pcs)
12. DRP-029 shifter pedal
13. DRP-012P toe peg clevis pin (2 pcs)
14. DRP-012S sliding adjuster for shifter
15. DRP-031 master cylinder bracket
16. DRP-067 right side heel guard
17. DRP-030 left side heel guard
18. DRP-042 master cylinder clevis pin
19. DRP-044 master cylinder clevis
20. DRP-068 sealed bearing (4 pcs)
21. DRP-029B shifter pedal bushing
22. DRP-040 exhaust hanger bracket
23. DRP-069 reservoir bracket
24. DRP-092 shift rod 8.5 inch
25. DRP-045 brake clevis pin spacer long

06-10 YAMAHA R6
PART#: DRP-505