



PART#: DRP-502 (YAMAHA R1 2007-2008)
INSTALLATION INSTRUCTIONS

DRIVEN PERFORMANCE PRODUCTS
WWW.DRIVENRACING.COM
866-5-DRIVEN

NOT INTENDED FOR USE ON PUBLIC ROADS

FOR OFF ROAD/RACE USE ONLY!

TOOLS REQUIRED



- 4mm hex key
- 5mm hex key
- 6mm hex key
- 8mm end wrench (optional)
*to remove gear shift arm for reverse shifting**
- 10mm end wrench (for jam nuts)
- 12mm end wrench (for clevis jam nut)
- 3/8" end wrench (for new shift rod)
- 14mm/17mm/22mm sockets and ratchet
- needle-nose pliers (for cotter pin)
- Loctite (blue #242)
- anti-seize lubricant



TORQUE SPECS AND INFO

- M10x1.5 – 55ft-lb (660in-lb)
- M8x1.25 – 20ft-lb (240in-lb)
- M6x1.0 – 13ft-lb (156in-lb)
- M5x0.8 – 5ft-lb (60in-lb)

OEM height set at the lowest forward mounting hole with the foot peg set at the zero position.

THIS PRODUCT TO BE INSTALLED BY A CERTIFIED TECH*

1. Loosen both of the jam nuts on the heim joints on the shift rod.
2. Remove the stock footrest assemblies from both sides of the bike.
3. Unscrew the shift rod from the heim joints and remove it from the frame.
4. Remove the nut (on the right side of the bike) from the engine mount bolt. (the head of the bolt is just above the kickstand area)
5. Remove the engine mount bolt and reinstall it from the right side.
6. Install the shifter standoff on the end of the engine mount bolt.
7. Remove the stock gear shift arm from the shift shaft splines and replace with the new unit orienting it so that it points towards the back of the bike.
8. Bolt the heim joints/shift rod assembly to the shifter and gear shift arm.
9. Install the new shifter onto the shifter standoff, utilizing the included bolt and bushing.
10. Install left and right frame brackets. (Note: bolt heatshield to right side brackets using included spacers before bolting to frame)
11. Install footpeg onto footrest bracket and adjust eccentric unit to desired location, noting index marks.
12. Install left and right footrest bracket assemblies in the desired mounting hole.
13. Adjust sliding portion of the shifter unit to attain desired shifter/footpeg distance.
14. Adjust shift rod to attain desired shifter/footpeg height.
15. Tighten heim joint jam nuts to finalize shifter height.
16. Replace original master cylinder clevis with new one and mount master cylinder to master cylinder bracket.
17. Adjust clevis to attain desired brake pedal height, tighten clevis jam nut, and install clevis pin/spacer/washer/cotter pin.
18. Check torque on all mounting bolts before riding, and again after approximately 20-50 miles to verify.
19. If reverse (GP) shifting is desired, relocate lower heim joint to the bolt hole in the shifter on the opposite side of the pivot point.

USE BLUE LOCTITE ON ALL MOUNTING BOLTS!

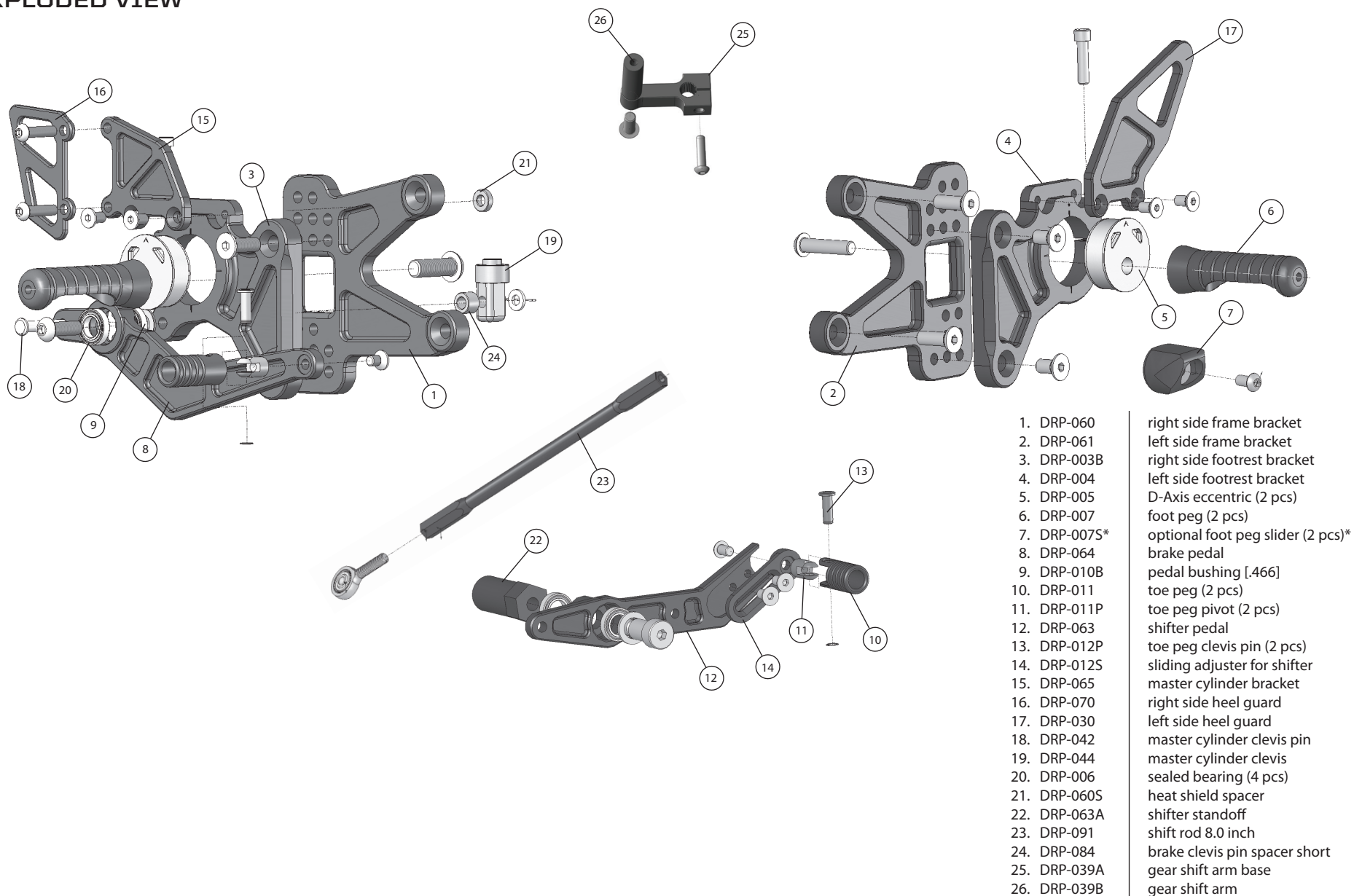
USE ANTI-SEIZE ON UNDERHEAD OF COUNTERSUNK BOLTS



PART#: DRP-502 (YAMAHA R1 2006-2008)
EXPLODED VIEW



DRIVEN PERFORMANCE PRODUCTS
 WWW.DRIVENRACING.COM
 866-5-DRIVEN



- | | |
|--------------|-----------------------------------|
| 1. DRP-060 | right side frame bracket |
| 2. DRP-061 | left side frame bracket |
| 3. DRP-003B | right side footrest bracket |
| 4. DRP-004 | left side footrest bracket |
| 5. DRP-005 | D-Axis eccentric (2 pcs) |
| 6. DRP-007 | foot peg (2 pcs) |
| 7. DRP-007S* | optional foot peg slider (2 pcs)* |
| 8. DRP-064 | brake pedal |
| 9. DRP-010B | pedal bushing [.466] |
| 10. DRP-011 | toe peg (2 pcs) |
| 11. DRP-011P | toe peg pivot (2 pcs) |
| 12. DRP-063 | shifter pedal |
| 13. DRP-012P | toe peg clevis pin (2 pcs) |
| 14. DRP-012S | sliding adjuster for shifter |
| 15. DRP-065 | master cylinder bracket |
| 16. DRP-070 | right side heel guard |
| 17. DRP-030 | left side heel guard |
| 18. DRP-042 | master cylinder clevis pin |
| 19. DRP-044 | master cylinder clevis |
| 20. DRP-006 | sealed bearing (4 pcs) |
| 21. DRP-060S | heat shield spacer |
| 22. DRP-063A | shifter stand-off |
| 23. DRP-091 | shift rod 8.0 inch |
| 24. DRP-084 | brake clevis pin spacer short |
| 25. DRP-039A | gear shift arm base |
| 26. DRP-039B | gear shift arm |