

FOR OFF ROAD/RACE USE ONLY!



Driven Racing '17-18 Kawasaki Z900 Fender Eliminator Kit

Part#:DKZ-030/031

INSTALLATION INSTRUCTIONS

1. Disconnect OEM turn signals and rear license plate light from the bike (see Fig 1).
2. Remove side panels and disconnect wires. (see Fig 2).
3. Install Driven Racing Fender Eliminator into bike using supplied hardware.
4. Replace side covers and seat.

NOTE: For Kit # DKZ-031, see installation instructions with turn signal kit(resistors must be used).

“After installation is complete, make sure tail light and brake light are working properly.”

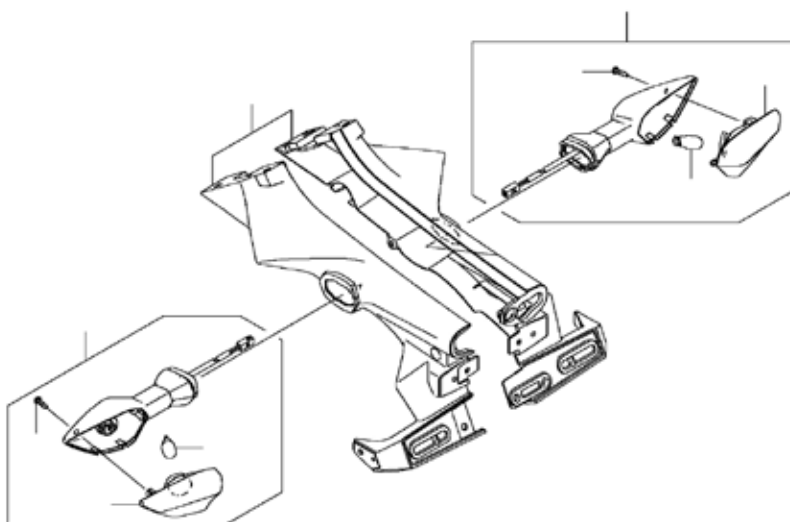


FIG 1.

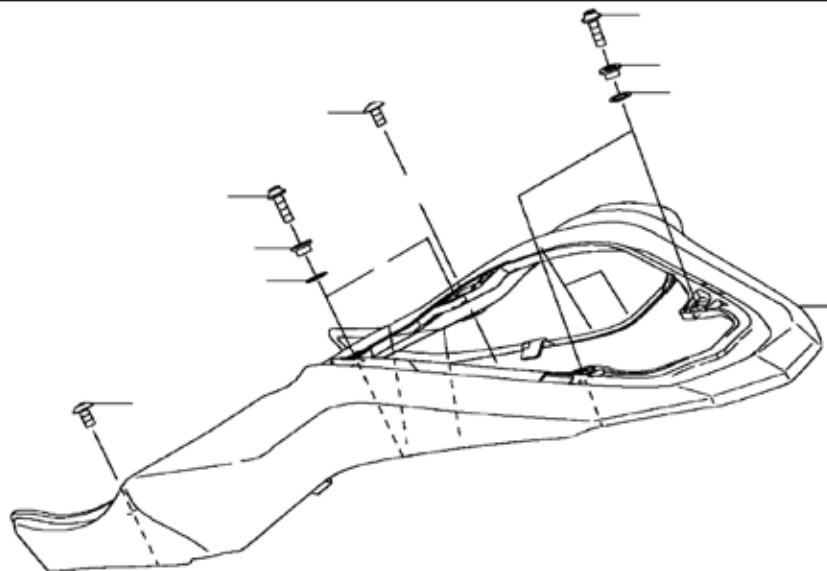


FIG 2.

THIS PRODUCT IS INTENDED TO BE INSTALLED BY A CERTIFIED TECHNICIAN*

