

**FOR OFF ROAD/RACE USE ONLY!**



*Driven Racing 2017 Kawasaki Z125 Fender Eliminator Kit  
Part#:DKZ-016/017*

**INSTALLATION INSTRUCTIONS**

1. Disconnect OEM turn signals and rear license plate light from the bike.
2. Remove entire fender from bike using a 10mm socket(see Fig 1).
3. Remove OEM license plate light.
4. Mount OEM license plate light to brackets (see Fig 2) using OEM screws
5. Install brackets onto bike using supplied M8 bolts.
6. Reconnect license plate light and check for proper operation.

NOTE: For Kit # DKZ-017, see installation instructions with turn signal kit(resistors must be used).



FIG 1.

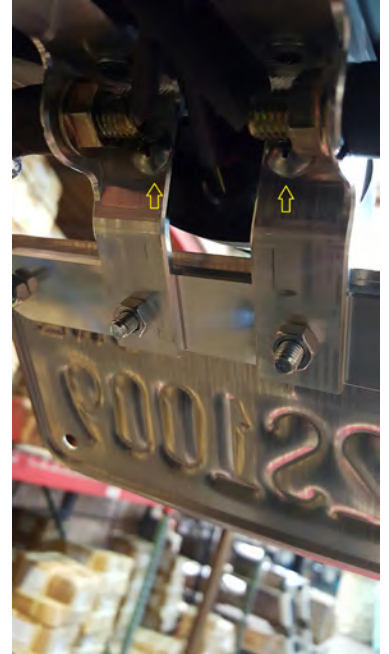


FIG 2.

**THIS PRODUCT IS INTENDED TO BE INSTALLED BY A CERTIFIED TECHNICIAN\***

**FOR OFF ROAD/RACE USE ONLY!**



*Driven Racing 2016 Kawasaki Z125 Fender Eliminator Kit  
Part#:DKZ-016/017*

**INSTALLATION INSTRUCTIONS**

1. Disconnect OEM turn signals and rear license plate light from the bike.
2. Remove entire fender from bike using a 10mm socket(see Fig 1).
3. Remove OEM license plate light.
4. Mount OEM license plate light to brackets (see Fig 2) using OEM screws
5. Install brackets onto bike using supplied M8 bolts.
6. Reconnect license plate light and check for proper operation.

NOTE: For Kit # DKZ-017, see installation instructions with turn signal kit(resistors must be used).



FIG 1.

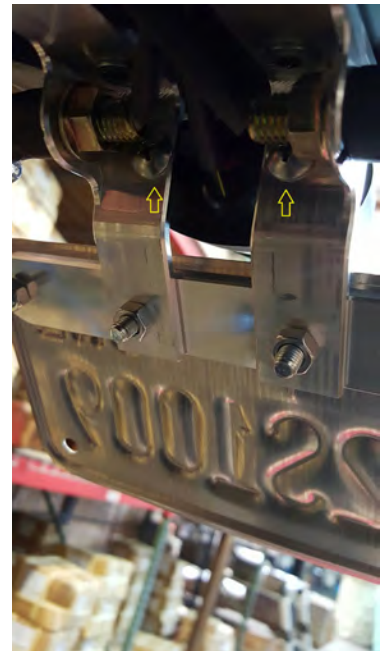


FIG 2.

**THIS PRODUCT IS INTENDED TO BE INSTALLED BY A CERTIFIED TECHNICIAN\***

